



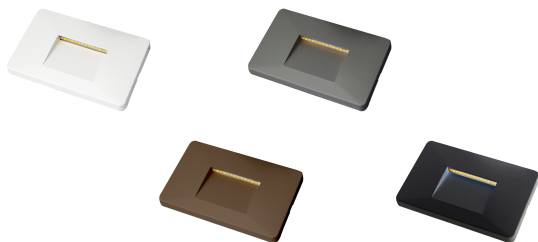
## ⚠ ATTENZIONE

Si raccomanda di rivolgersi a un elettricista qualificato per installare il prodotto.

Si raccomanda di non toccare il prodotto quando è acceso.

In caso di malfunzionamento, staccare la lampada dall'alimentazione. Si raccomanda di rivolgersi a un elettricista e di non provare a riparare la lampada da soli.

## MANUALE D'ISTRUZIONI EDEN SEGNAPASSO 503



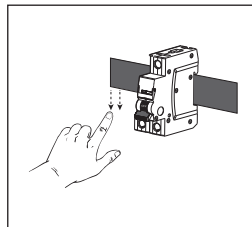
### Specifiche tecniche:

	MISURE	W	Lumen	AC/Hz	3CCT (SWITCH)	CRI	α	TEMP. LAVORO	FINITURA	FLICKER	DIMM.	CLASSE	IK
IP3503BS	134*85*13mm	3	240	AC2180-250V Hz 50/60	3000/4000/6500K	80	100°	-20°+50°	BIANCA	FREE	NO	II	08
IP3503CS	134*85*13mm	3	240	AC2180-250V Hz 50/60	3000/4000/6500K	80	100°	-20°+50°	CORTEN	FREE	NO	II	08
IP3503GS	134*85*13mm	3	240	AC2180-250V Hz 50/60	3000/4000/6500K	80	100°	-20°+50°	GRIGIO	FREE	NO	II	08
IP3503NS	134*85*13mm	3	240	AC2180-250V Hz 50/60	3000/4000/6500K	80	100°	-20°+50°	NERO	FREE	NO	II	08

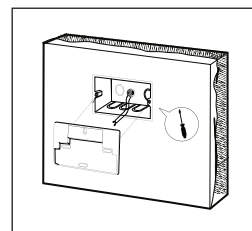
Segnapasso 503 per l'illuminazione decorativa di zone di passaggio e scale. Corpo e diffusore V2 autoestinguente e Anti-UV in policarbonato termoplastico e staffa in lega di alluminio. Disponibile in quattro finiture: bianco, nero, corten e grigio. Resistente agli urti.

1

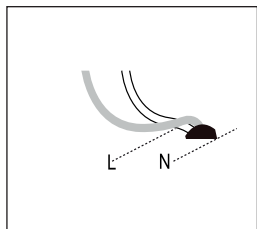
## MONTAGGIO



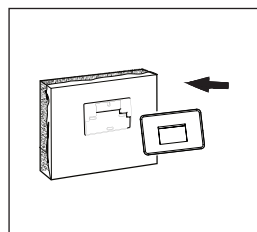
1. Scollegare la corrente elettrica.



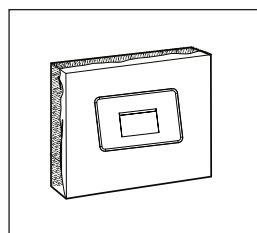
2. Scegliere la posizione desiderata per installare la staffa.



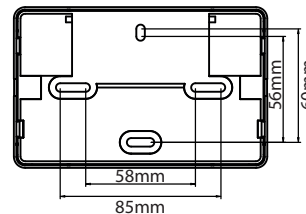
3. Collegare il cavo della corrente.



4. Spingere il prodotto verso l'alto nella staffa.



5. La lampada è pronta all'uso.



### Informazioni sul riciclaggio in conformità con le direttive RAAE e batterie



Simbolo sul prodotto

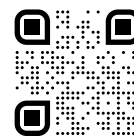


Simbolo sulla batteria

Solo Europa

Il prodotto/batteria è contrassegnato con uno dei simboli di riciclaggio sopra indicati. Questo indica che a fine vita il prodotto/batteria, dovrà essere smaltito/a separatamente in appropriati luoghi di raccolta e non con i normali rifiuti domestici.

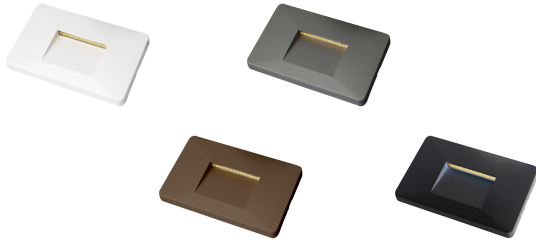
CE RoHs



**IPERLUX®**  
www.iperlux.com  
info@iperlux.com

## INSTRUCTION MANUAL

### EDEN STEP MARKER 503

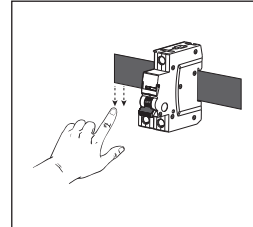


It is recommended to contact a qualified electrician to install the product.

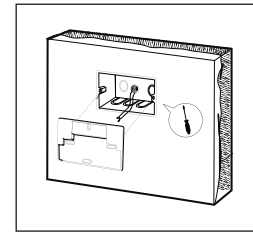
It is recommended not to touch the product when it is turned on.

In case of malfunction, disconnect the lamp from the power supply. It is recommended to contact an electrician and not try to repair the lamp yourself.

## MOUNTING



1. Switch off the power.



2. Choose the required position to install the bracket.

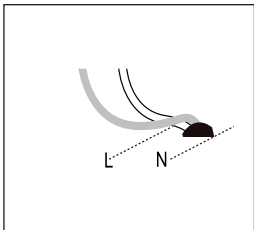
## Specifications and Technical Data sheet:

	SIZE	W	Lumen	AC/Hz	3CCT (SWITCH)	CRI	α	AMB. TEMPER.	FINISH	FLICKER	DIMM.	CLASS	IK
IP3503BS	134*85*13mm	3	240	AC180-250V Hz 50/60	3000/4000/6500K	80	100°	-20°+50°	WHITE	FREE	NO	II	08
IP3503CS	134*85*13mm	3	240	AC180-250V Hz 50/60	3000/4000/6500K	80	100°	-20°+50°	CORTEN	FREE	NO	II	08
IP3503GS	134*85*13mm	3	240	AC180-250V Hz 50/60	3000/4000/6500K	80	100°	-20°+50°	GREY	FREE	NO	II	08
IP3503NS	134*85*13mm	3	240	AC180-250V Hz 50/60	3000/4000/6500K	80	100°	-20°+50°	BLACK	FREE	NO	II	08

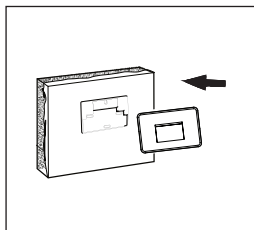
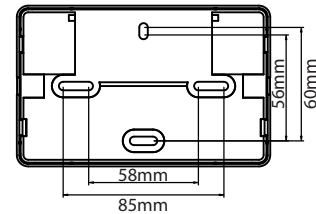
Step marker 503 Ideal for transit areas and stairs.  
ANTI-UV and V2 Self-extinguishing thermoplastic PC housing and diffusor and aluminium alloy bracket. Available in four finishes: white, black, corten and grey.  
Resistant to impacts.

1

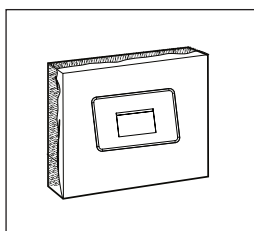
2



3. Connect the power cable.



4. Push the product upward into the bracket.



5. Fixture is ready to use.

## Recycling Information in Accordance with the WEEE and Battery Directives



Product Mark

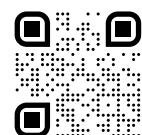


Battery Mark

Europe only

The product/battery is marked with one of the above recycling symbols. It indicates that at the end of the life of the product/battery, you should dispose of it separately at an appropriate collection point and not place it in normal domestic waste stream.

CE RoHs



**IPERLUX®**  
www.iperlux.com  
info@iperlux.com